



Columbia Wings

Group Riding Refresher
and Lead/Sweep Level I



Columbia Wings



- Group Riding-What we'll cover
 - Why do we ride as a group?
 - Member responsibilities
 - Bike Spacing
 - Group Makeup
 - Group Movements
 - Hand Signals
 - CB Etiquette
 - Bike Problems



Columbia Wings

Group Riding



- Why do we ride as a group?
 - Reduce rider risk
 - Increase enjoyment
 - Increase sense of togetherness and pride.



Columbia Wings

Group Riding



- Member responsibilities
 - Ride your own ride.
 - Arrive prepared.
 - Communicate any changes.
 - Maintain spacing.
 - Follow Lead/Sweep directions.



Columbia Wings

Group Riding



- Bike Spacing
 - 2 second rule is normal
 - If you are towing a trailer, increase spacing.
 - If you have a vehicle merging onto the highway, they have no choice, so open up and let them in.

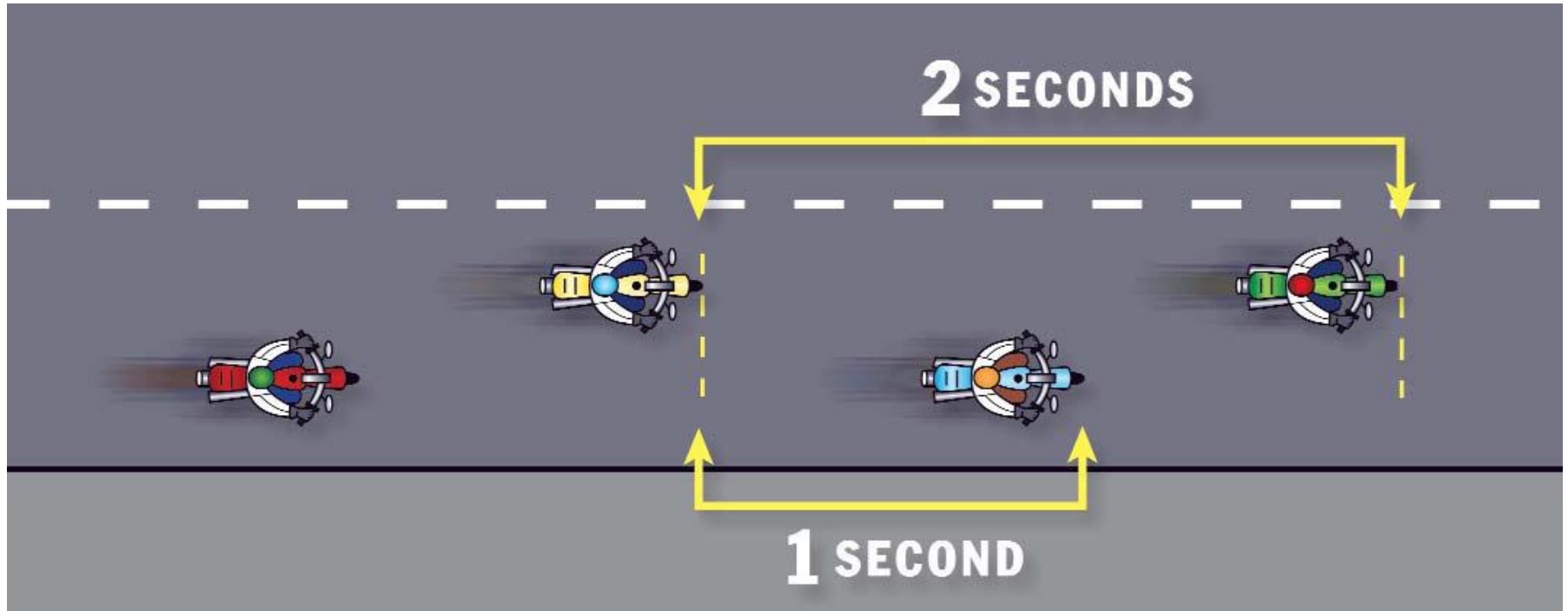


Columbia Wings

Group Riding



- Bike Spacing





Columbia Wings

Group Riding



- Group Makeup
 - Trikes, Trailers, Sidecars
 - If there are enough, they are a separate group.
 - If not, have them in front of an experienced sweep.
 - New riders
 - Where they are comfortable.
 - Position #2 results in less speed changes
 - Have good riders ahead and behind
 - Bikes without CB's
 - In the middle



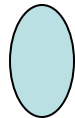
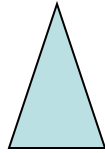
Columbia Wings

Group Riding



Trikes

Trailers



Trailers need more
braking room.
Increase spacing.

Trikes can brake in
corners, give extra
spacing.





Columbia Wings

Group Riding



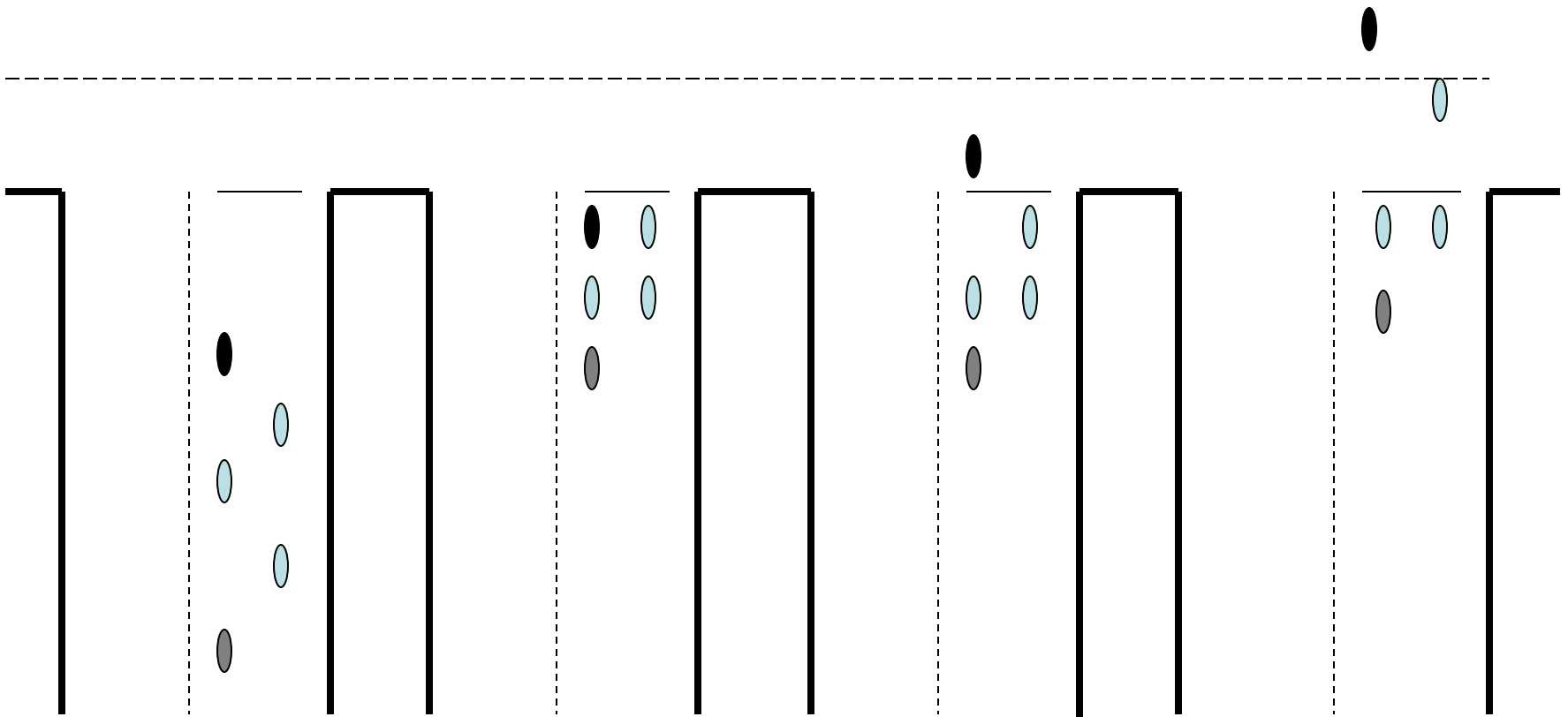
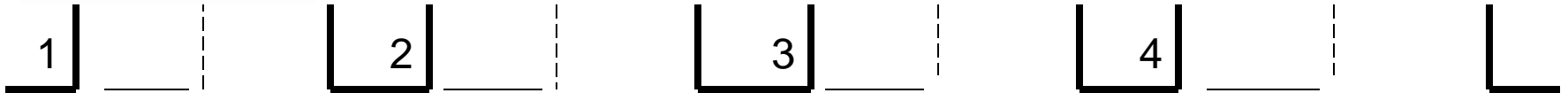
- Group Movements
 - Stop signs/lights
 - Lane changes
 - Single lane passing
 - Highway merging



Columbia Wings



Group Riding

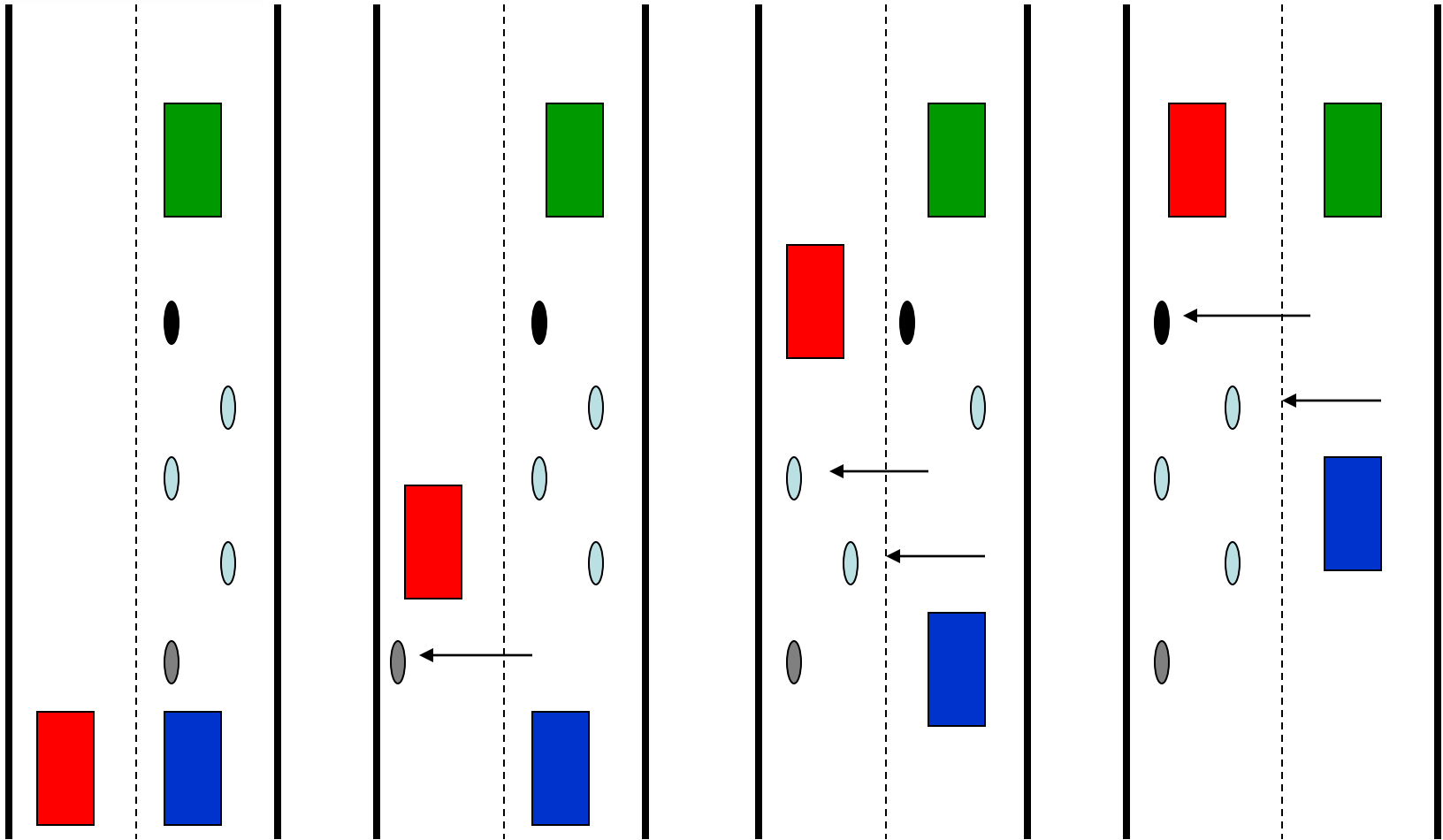


Stop Signs/Lights



Columbia Wings

Group Riding

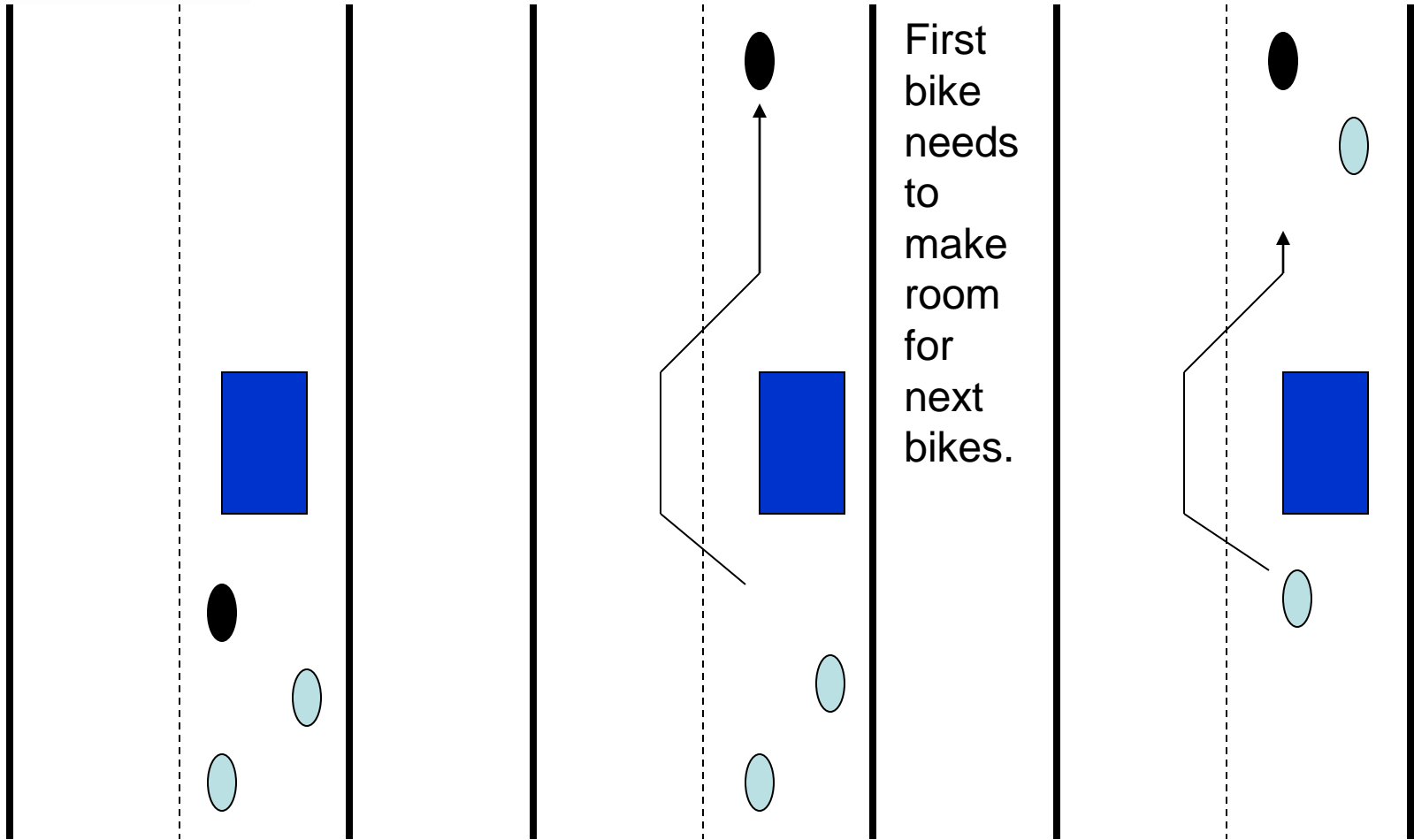


Changing Lanes



Columbia Wings

Group Riding



First bike needs to make room for next bikes.

Passing



Columbia Wings

Group Riding



- Merging
 - Ride single file
 - Ride your own ride
 - Merge safely, even if you can't stay with the bike ahead of you.
 - Regroup, if needed, down the road.



Columbia Wings

Group Riding



- Hand Signals

Single File - arm and index finger extended straight up



Hazard in Roadway - on the right, point with right foot; on the left, point with left hand



Double File - arm with index and middle finger extended straight up



-Lead will use CB and hand signals

-When the bike ahead of you uses a hand signal, you repeat it so the bike behind you sees it also.



Columbia Wings

Group Riding



- CB etiquette
 - In town, increased traffic.
 - Let the Lead and Sweep have a clear channel.
 - Listen for Lead/Sweep instructions
 - Out in the country, more relaxed.
 - Short sentences
 - Still listen for Lead/Sweep
 - If you need to stop, let the Leader know.
 - Remember, there is a delay.



Columbia Wings

Group Riding



- Misc Items

- Leaving the group

- Let the group know you are leaving.
 - Peel off safely and wave so no one tries to follow.

- Bike Problems (Out of gas, flat tire, engine issues, etc.)

- Let the group know
 - Pull over safely (Sweep will pull over with you)
 - The rest of the group stays together
 - Lead will find a safe place for the group to pull over.



Columbia Wings

Group Riding



- Questions?



Columbia Wings

Lead/Sweep Level I



- Lead/Sweep Level I
 - When-if the group gets separated by traffic or lights.
 - Who-the last bike of the first group is Sweep. The first bike of the second group is Lead.
 - Why-to safely get the group back together.



Columbia Wings

Leader/Sweep Level I



- Leader (temporarily)
 - Inform your group that you are now leader of Group 2
 - When talking on the CB, identify which group you are with.
 - “Group 2 lead to Group 2 sweep, secure lane 1, please.”
 - “Lead with your mirrors”
 - Focus on leading, not catching up.
 - Watch your speed
 - Call out obstructions and use hand signals
 - Call out turns
 - As leader of group 2, keep in touch with group 1 lead (or sweep if too far away).
 - Let Lead know when you have rejoined the group.



Columbia Wings

Leader/Sweep Level I



- Sweep (temporarily)
 - Make contact with leader.
 - “Group 1 Lead, I am now Group 1 Sweep”
 - Secure lane changes as requested.
 - Lane 1 is the most inside (fast) lane.
 - Be CB relay to group 2 if needed.



Columbia Wings

Lead/Sweep Level I



- Questions?



Columbia Wings



- Summary
 - Ride your own ride
 - You are ultimately responsible for your own safety.
 - Maintain the group
 - Large gaps invite cage intrusions.
 - Enjoy riding with your friends.
 - Be ready and willing to step up to Lead or Sweep when the time comes.



Columbia Wings

Thank you for coming.

Let's Ride!